



Canine CRP Calibrator Kit

Catalogue No: TP-812-CAL

Intended Use:

The Canine CRP calibrator kit is intended for use with the Canine CRP immunoturbidimetric reagent kit (Tridelta, Cat no. TP-812-RGT). It is strictly for veterinary in vitro use as an aid in day-to-day canine CRP assay calibration. Components of the calibration set are available as a kit only.

Calibration Materials Provided & Reagent Description:

Calibration is performed with the Canine CRP calibration set. Calibrator is provided as follows

- 1 x 0.5ml 60ug/ml calibrator

The Canine CRP calibrator is processed serum at a concentration of 60ug/ml canine CRP. It is prepared in this manner to avoid any inaccuracies that can occur due to matrix differences. Other additives are included to preserve the products characteristics.

The calibrator is diluted using a calibrator/sample diluent (provided in the Canine CRP immunoturbidimetric reagent kit, Cat no. TP-812-RGT). This dilution takes place onboard the automated chemistry analyser.

Materials required but not provided include:

The Canine CRP immunoturbidimetric reagent kit (Tridelta, Cat no. TP-812-RGT), Canine CRP immunoturbidimetric control kit (Tridelta, Cat no. TP-812-CON), an automated chemistry analyser and its requirements for use.

Reagent preparation & procedure for use:

The calibrator is provided ready to use. Bring to room temperature before use. Dilution of the calibrator takes place onboard the automated chemistry analyser covering the range 0-60ug/ml (5 point calibration curve). The calibrator is diluted using a 1X calibrator diluent. Mix the calibrator by inversion at least 5 times to ensure homogeneity prior to use. Refrigerate any unused material. Prior to reuse, mix contents thoroughly.

Storage instructions and stability:

- **Unopened calibrator expiration date:** Store refrigerated at 2°C-8°C. Stable until the first day of the month of the expiration date printed on the calibrator set label.
- **Opened calibrator expiration date:** After opening this product is stable for 4 months (or until it reaches its expiry date) when refrigerated at 2°C-8°C and if kept stoppered in its original container and free from contamination.
- **On-Board stability:** Opened Canine CRP calibrator has on-board stability for eight hours in a stoppered container.

Procedure & Sample Handling:

Assay the calibrator according to the calibration procedure below in the context of an internal calibration programme. A specific lot number and the date it was opened should be recorded to identify each calibrator.

Calibration:

Calibration should be performed when the Canine CRP test is established on an automated chemistry analyser.

This calibration curve is automatically stored on the automated chemistry analyser once the test has been assigned to a reagent position.

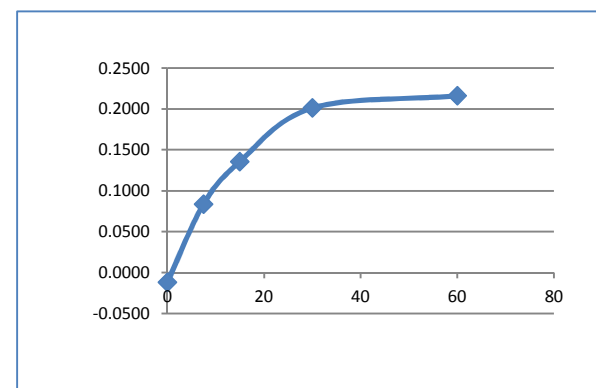
Recalibration is required after:

- The replacement of critical components
- A change in reagent lot number
- If the instrument undergoes any maintenance or cleaning.
- Or if quality control results are outside the acceptable limits

Calibration curve stability has been determined to be up to 8 weeks when the proper conditions are met. However, stability should be assessed and determined for each individual laboratory by running the calibrator product as an unknown sample. Such verification should be part of each laboratories quality control programme.

Warnings and Precautions:

For in vitro veterinary use only. Follow universal precautions and handle all components as if capable of transmitting infectious agents.



Example of a Canine CRP standard curve:

These are the expected results when calibration curve is performed on Cobas Mira at 37°C. The delta absorbance 600nm (Y-axis) has been plotted against the calibrator concentration ug/ml (X-axis).

cCRP CAL -06/14